

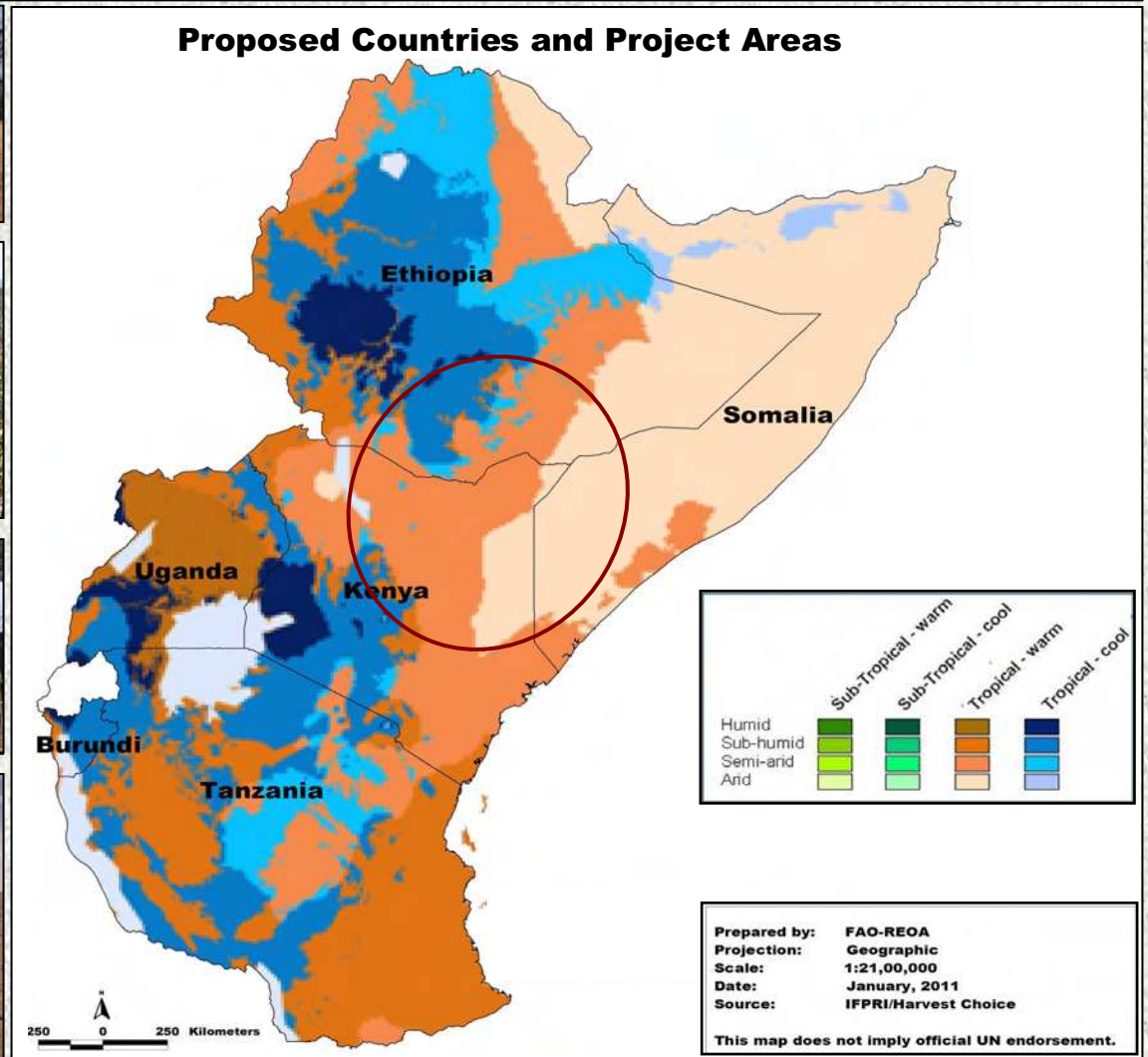


March 22

LAUNCH OF THE REGIONAL DRY LANDS INITIATIVE

Date: 22 March (10 – 12 am)

Venue: ILRI Nairobi Campus, (John Vercoe Conference Centre - JVC)



Dry-lands are responsible for more than 20% of food production globally, however, due to rapid population growth, greater climatic variability and a rapidly depleting resource base, livelihoods of millions, especially vulnerable communities are at risk. To cope with these pressures, FAO and its partners designed under the Food Security and Nutrition Working Group (FSNWG), the Regional Dry Lands Initiative: *“Climate change adaptation and mitigation for communities in dryland regions”*.

Targeting about 1.3 million people at a first phase, the initiative aims to make a significant contribution to food security focusing mainly on agro-pastoralists and smallholder farmers in Ethiopia, Kenya and Somalia. The overall goal of the Initiative is to contribute to sustainable food security and livelihoods by increasing the resilience of vulnerable communities. The Launch will bring together partners from the FSNWG including donor representatives, regional research and development partners, National research and extension representatives and stakeholders from specialised agencies and engaged in dry land initiatives.



NEED FOR COORDINATED AND INFORMED ACTION TO CONTRIBUTE TO SUSTAINABLE FOOD SECURITY AND LIVELIHOODS OF COMMUNITIES AFFECTED BY CLIMATE CHANGE



Launch Programme

- 1) History and current context
- 2) Rational for dry land agriculture
- 3) Status of dry land interventions
- 4) Success stories
- 5) Potentials and opportunities
- 6) Discussions

By bringing together relevant stakeholders, we aim to create awareness on the challenges facing the dry lands pointing out the existing technological and institutional potentials to address some of the most prevailing issues. The launch will thus provide a unique opportunity to give feedback to the proposal and express interest to providing support.



For further Directions to the venue, Please visit the following Link:

[Google Earth Directions to ILRI](#)



Contacts:

Jan Helsen: Regional Emergency Officer (Agriculture)
 Sub-Regional Emergency Office for Africa
Jan.helsen@fao.org
 Tel: +254734600850
www.disasterriskreduction.net/

James Kinyangi: CCAFS Regional Director (East Africa)
 International Livestock Research Institute
J.Kinyangi@cgiar.org
 Tel: +254710749139
www.ilri.org